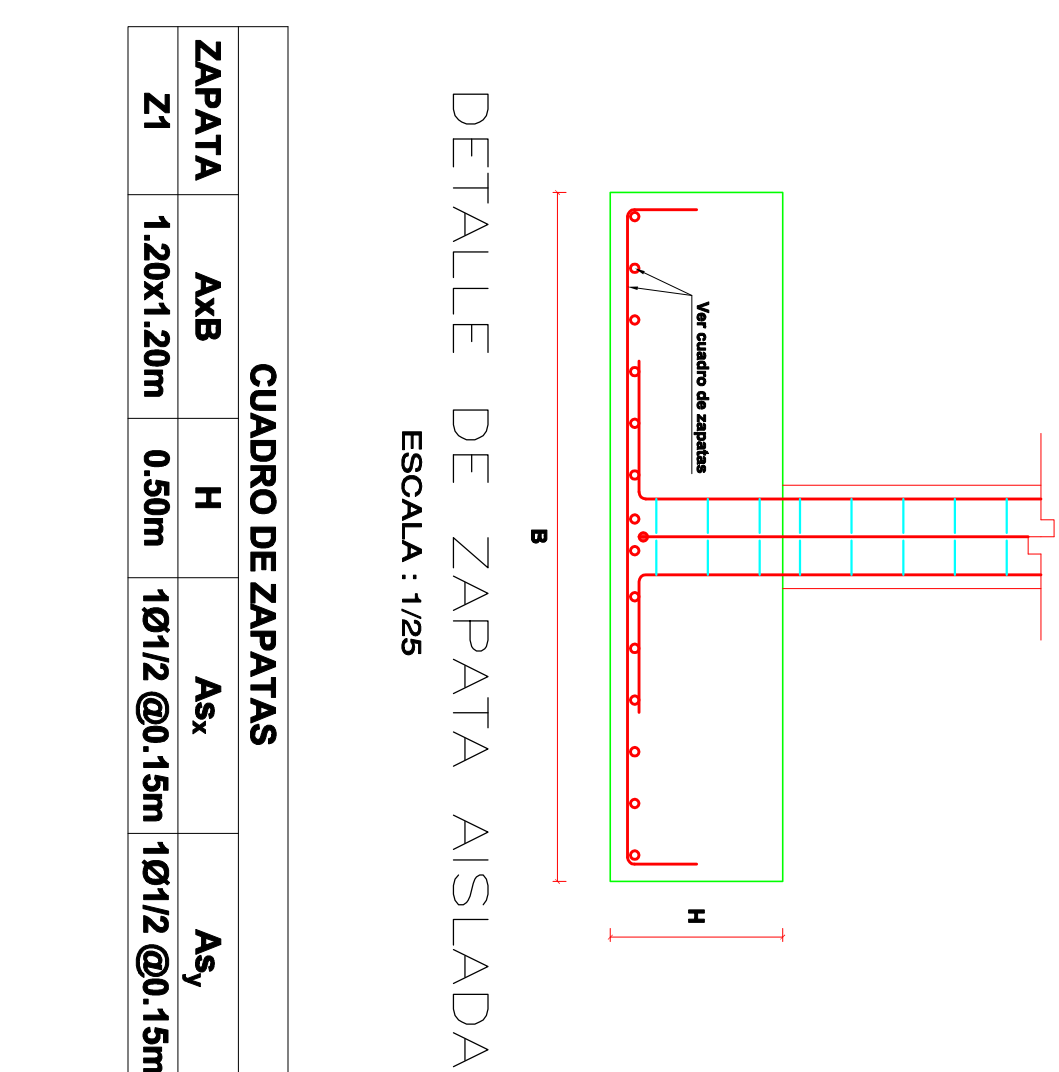
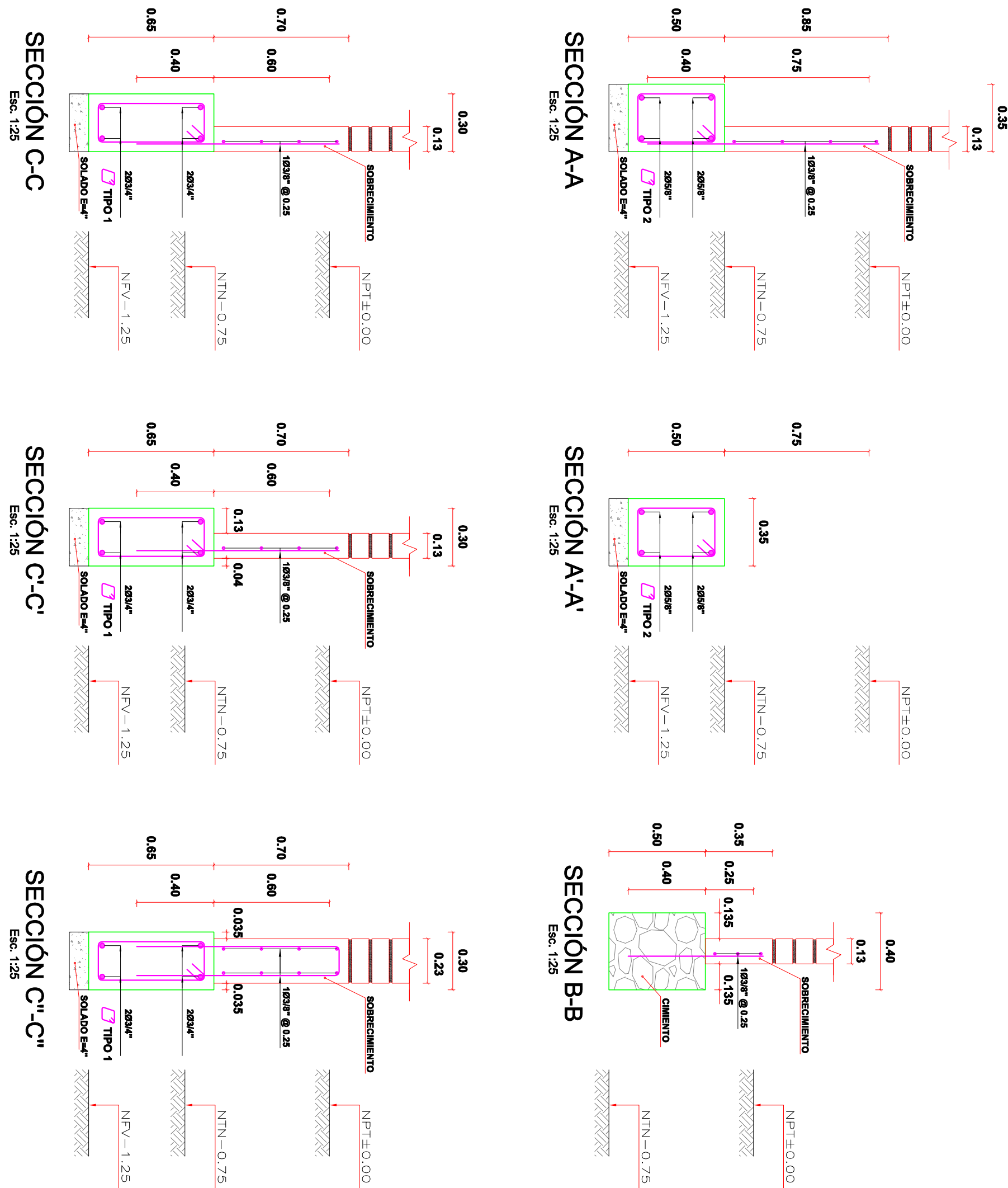
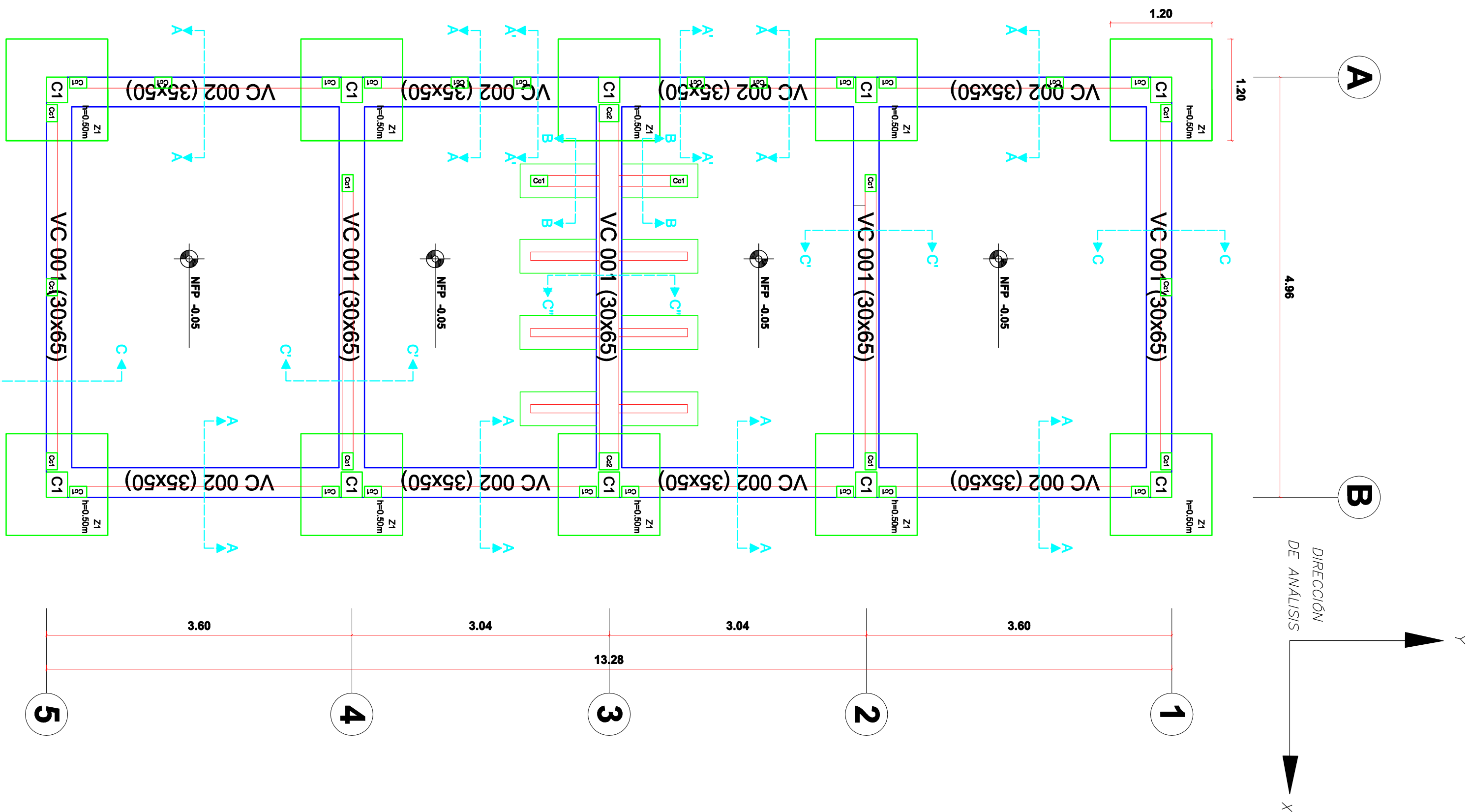
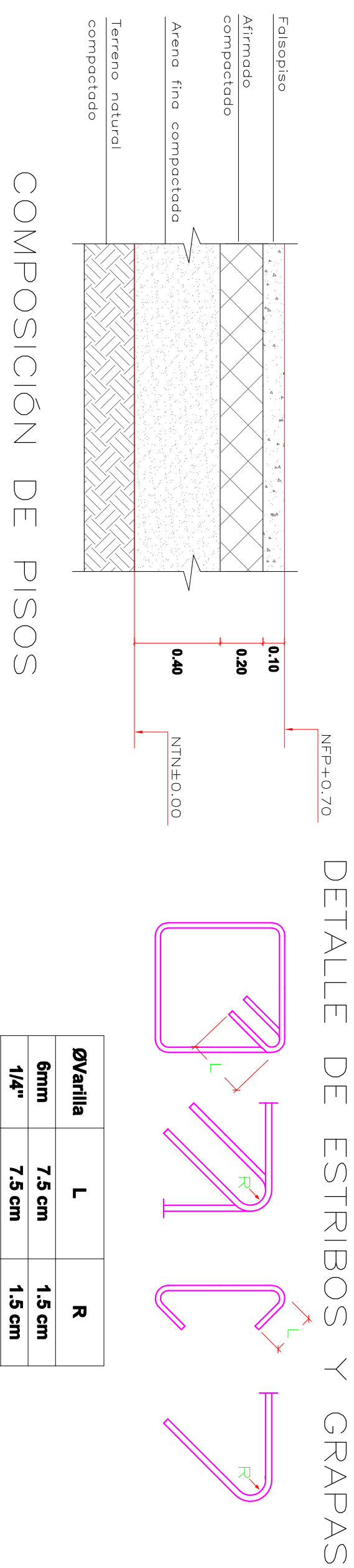


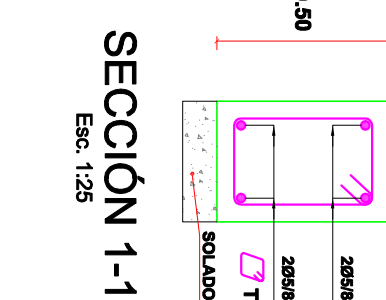
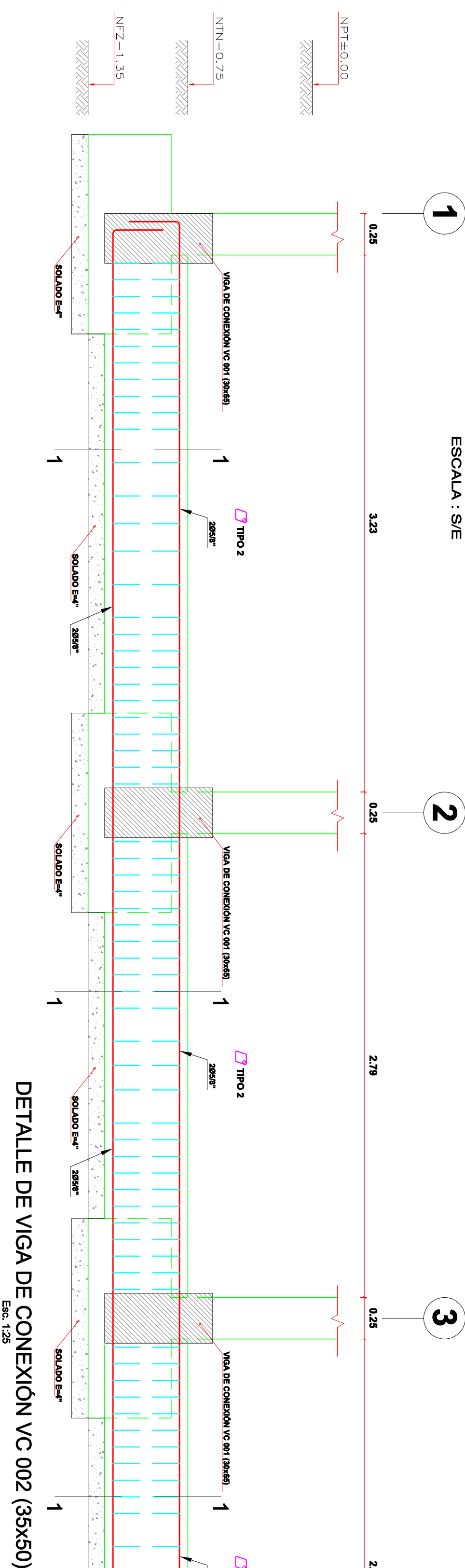
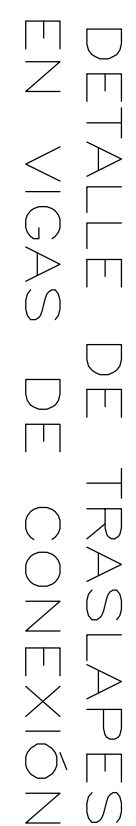
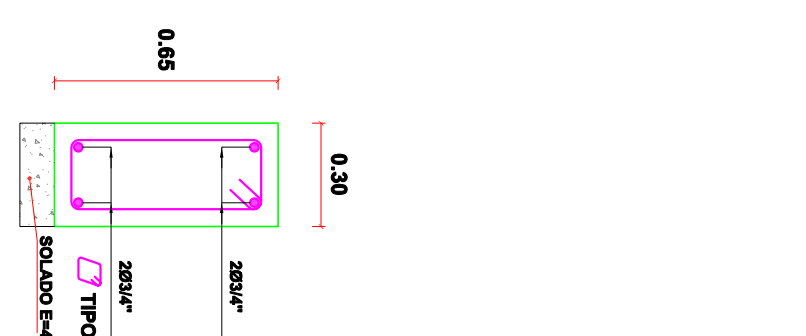
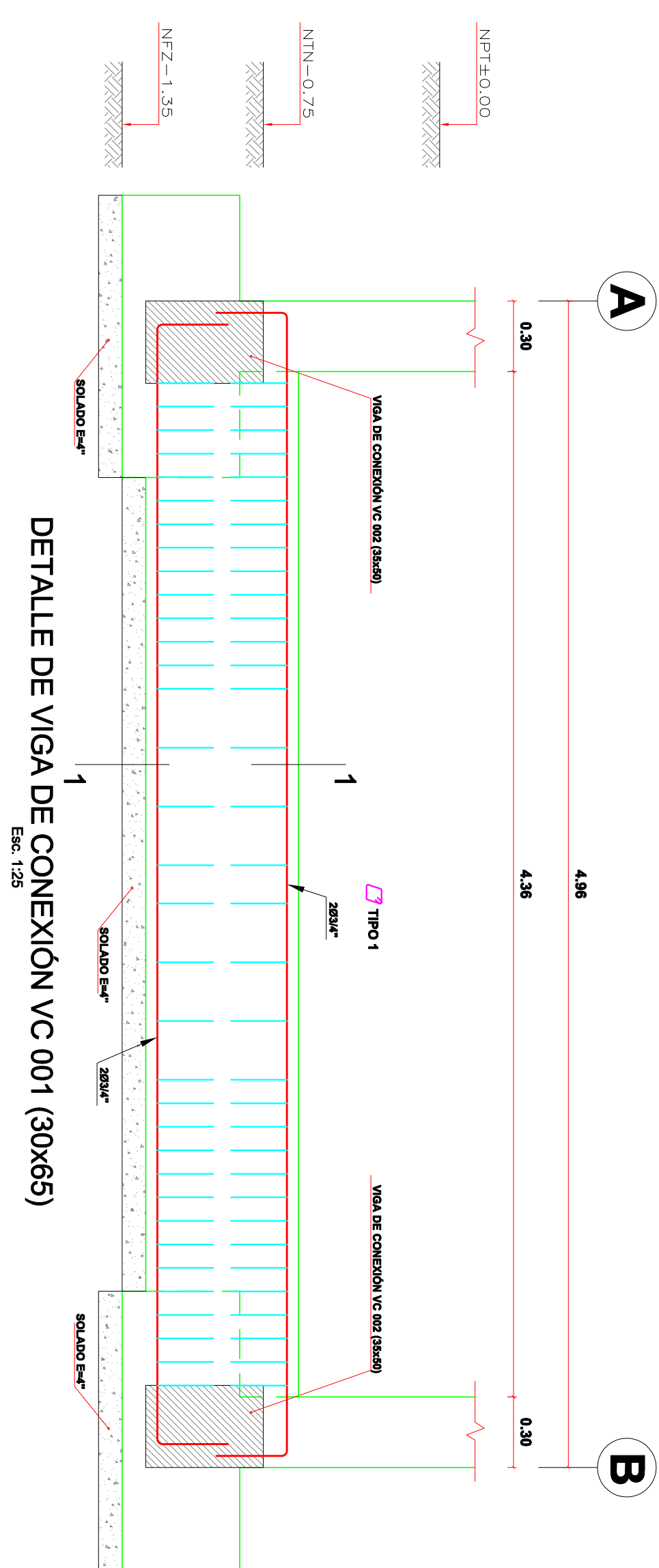
ESPECIFICACIONES TÉCNICAS

[illegible]

CUADRO DE ZAPATAS			
ZAPATA	AXB	H	Asx Asy
Z1	1.20x1.20m	0.50m	1Ø1/2 @0.15m 1Ø1/2 @0.15m



ØVarilla	L	R
6mm	7.5 cm	1.5 cm
1/4"	7.5 cm	1.5 cm
3/8"	10.0 cm	2.0 cm



CUADRO DE ESTRIBOS					
TIPO	Ø	DISTRIBUCIÓN			
1	3/8"	1@0.05, 13@0.10, Ri@0.25 A/E			
2	3/8"	1@0.05, 10@0.10, Ri@0.20 A/E			
3	3/8"	1@0.05, 9@0.075, 3@0.125, Ri@0.15 A/E			
4	3/8"	1@0.05, 9@0.05, Ri@0.10 A/E			
5	3/8"	1@0.05, 7@0.075, Ri@0.15 A/E			
6	6mm	1@0.05, 5@0.10, Ri@0.25 A/E			
7	3/8"	1@0.10, Ri@0.10 A/E			

4

